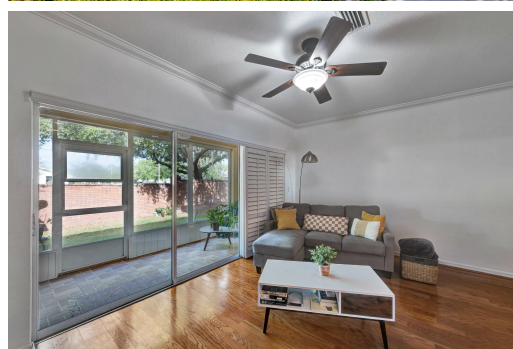


13515 Daniels Landing Circle, Winter Garden, FL 34787

For More Info Visit
tourdrops.com/dtour/391073



Julie Vega Dominguez PA
Premier Sotheby's International Realty | The Dominguez Group
786.303.7111
julie.dominguez@premiersir.com
thedominguezgroup.premiersothebysrealty.com



2 Beds | 2.5 Baths | 1208 Sqft

Information provided is for consumer's personal, non-commercial use and may not be used for any purpose other than to identify prospective properties consumers may be interested in purchasing. Information is deemed reliable but not guaranteed.