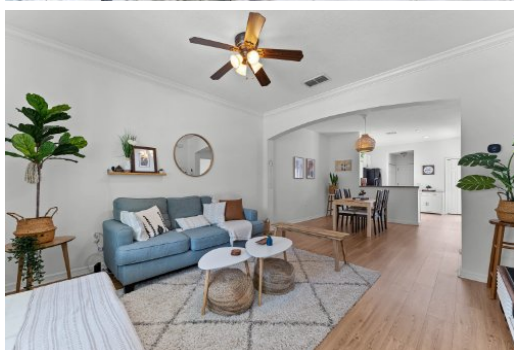




Tennille Biggers
Keller Williams Elite Partners III
850-628-4455
tennillebiggers@kw.com
www.tennillebiggers.com



Tennille Biggers
REALTOR
Keller Williams
Elite Partners III



4 Beds | 2.5 Baths | 1642 Sqft
420,000

Welcome to Summerport where location is everything as great schools are nearby and you're just minutes away from the community pool, tennis courts, basketball court, fitness center, clubhouse, and dock on Walsh Pond. When you pull up to the townhome, you'll find ample guest parking in the front, new exterior paint (2024) and a charming front porch. Enter the home to find a warm space with vinyl plank flooring (2020), crown molding, and a ceiling fan. This model has an open floorplan with a combined living and dining space. The kitchen has nice counter space, storage, a closet pantry and a new dishwasher (2021) and faucet. The laundry closet is conveniently located in the kitchen and the new smart washer and dryer (2023) convey! You'll find sliding glass doors that open to a private and partially fenced paver patio. The primary suite is downstairs and has a garden tub, walk-in closet, and upgraded lighting in the bathroom. There is also a half bathroom downstairs. Upstairs you'll find the additional bedrooms and bathroom. The 3 bedrooms upstairs have floor outlets and bedroom 4 has a niche for a desk or reading nook. This home is move-in ready with a new AC (2023), new roof (2022), Ecobee smart thermostat, smart lock on the front door, a new smart garage door opener in the attached 2-car garage and gutters. Theme parks, shopping, restaurants and more are just minutes away as Summerport is near the 429 and Winter Garden Vineland Rd.

Information provided is for consumer's personal, non-commercial use and may not be used for any purpose other than to identify prospective properties consumers may be interested in purchasing. Information is deemed reliable but not guaranteed.