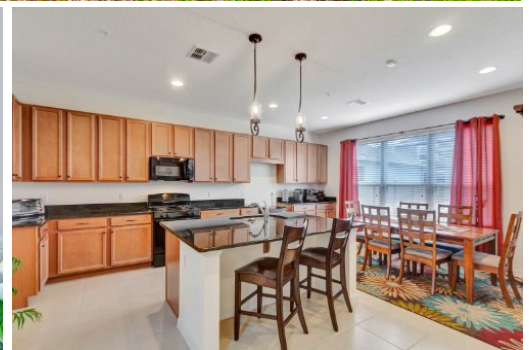


5527 Bowman Drive, Winter Garden, FL 34787

For More Info Visit
tourdrop.com/dtour/382291



Susan Schneider
Coldwell Banker Realty
407-461-1150
susan.schneider@floridamoves.com
<https://susanschneiderrealtor.com/>



2 Beds | 2.5 Baths | 1868 Sqft
555,000

If you love parks, green spaces, strolls, and living in a natural habitat, The Cove at Hamlin, a lake-oriented waterfront community can make your dream come true. Location is everything and this 2 bed, 2 and 1/2 bath urban cottage is close to SR-429 and a short distance to Hamlin Town Center where you can benefit from an array of shops, restaurants, and local events. Not to mention excellent schools and top-notch hospitals. The Cove, located in the master-planned community of the Overlook at Hamlin, provides access to a plethora of amenities for your enjoyment. With lawn care and pest control included in your HOA dues, you will find more time to take advantage of the sunshine and all Florida offers - Disney Parks, Universal, golfing, and other Orlando attractions. Contact me today so you can become part of the exciting and vibrant community of Horizon West, one of the best places to live in Florida!