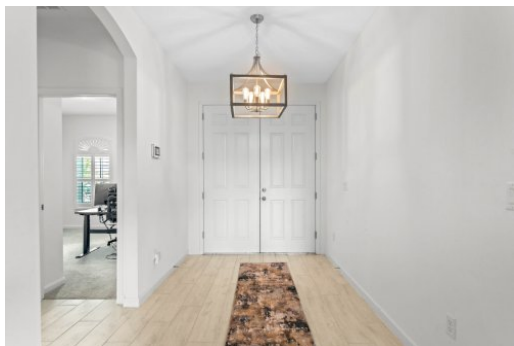




Sharon O'Malley
MBA Realty Group, Inc.
407-488-5316
mpoceltic@aol.com



4 Beds | 3 Baths | 2525 Sqft
579990

The Hills are alive in the up-and-coming town of Minneola. This slice of paradise is closely located to outstanding shopping, theme parks, fine cuisine and you can get anywhere since you have quick access to all central Florida expressways. Welcome to the Ardmore Reserve neighborhood complete with a resort style zero entry swimming pool and covered playground while located amid baseball fields, walking trails, golf and a wonderful Minneola school district. After admiring all those features, the magic begins as you drive onto the pavers your 3-car garage at 1225 Blarney! Welcome to the popular Avalon model. Just arriving at your homesite, you know you are somewhere special on your hilly street. Do not forget to admire your lush landscaping before entering into this gentle used home. The grand foyer leads to a great room including a formal dining room. The gourmet kitchen is to the left and will make the chef of the home heart skip a beat as a large wrap around kitchen plan unfolds. Do n