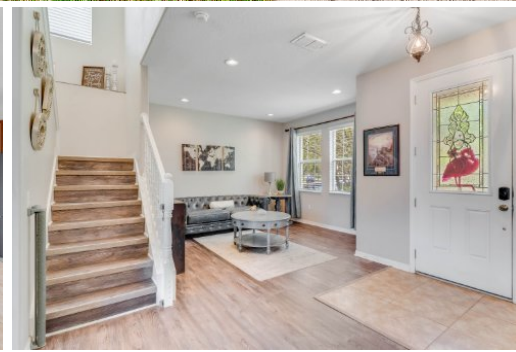




Jaime Carr
Knight & Drews

jaime@grizzlyconstruction.net
knightanddrewsrealestate.com



6 Beds | 3 Baths | 3367 Sqft

This Beautiful 2- Story, 6 Bedroom Won't last long, Priced to sell quick!!! Located in the highly desired Stevens Plantation in St. Cloud. The HOA is Only \$67 a month which includes Cable/Internet. This Open Floor Plan is perfect for entertaining!! The Kitchen is a cooks dream, with great counterspace, beautiful granite, SS Appliances, and plenty of Cabinet space. LOCATION IS AMAZING!! Less than 5 Minutes to Orlando Health, About 10 Minutes to the BOAT RAMP. About 5 miles to the Florida Turnpike , near Downtown Kissimmee, Downtown Orlando, OIA, Medical City at Lake Nona.