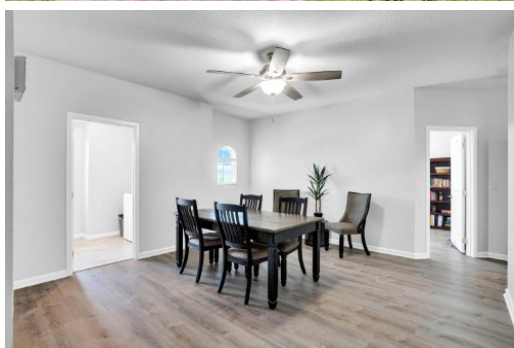
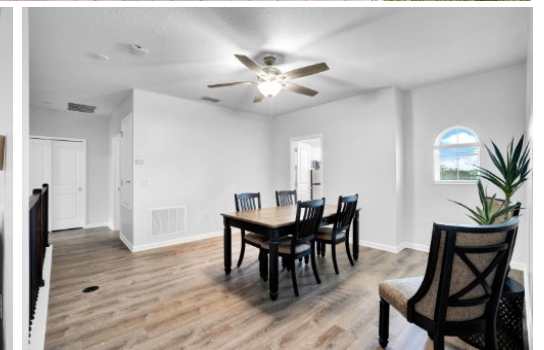




Misty Noland
ERA Grizzard Real Estate
352-255-2502
mnoland@eragrizzard.com
www.MistyNoland.com



THE NOLAND TEAM
ERA GRIZZARD
REAL ESTATE
(352) 255-2502



5 Beds | 3 Baths | 2610 Sqft

Experience modern living just minutes from charming downtown Mount Dora! Your new home in the gated waterfront community of Dora Parc offers the perfect combination of convenience and tranquility. Dora Parc is located on a short canal to Lake Dora on the Harris chain of lakes and less than a mile from the Mount Dora boat ramp/marina making it super convenient for boating and nature lovers alike. As you arrive, notice that the covered front porch is an amazing spot for watching the stunning Lake Dora sunsets. Step inside and you'll be greeted by an open-concept floor plan that seamlessly blends the living room, dining area, and kitchen, providing a comfortable and welcoming atmosphere that's great for hosting guests or a quiet night at home. The kitchen boasts beautiful quartz countertops, a large center island with an upgraded single basin sink, stainless steel appliances, and ample storage space that makes time spent cooking your favorite meals a joy. Your new home also features fresh paint throughout and upgraded flooring with all the carpet replaced by a stunning and sturdy wood grain vinyl plank. In addition to the large common area, the downstairs features a bedroom, a full bathroom, and a large flex room making it great for friends or family. Upstairs you will find a large master bedroom with a ceiling fan, pre-wired internet jack, plenty of room for a king-size bedroom set and a master bathroom that features a dual sink vanity, walk-in shower, separate garden tub, water closet, and a large walk-in closet. In addition to the master suite, the upstairs also includes a large bonus room, an owner's closet, a laundry room with a network closet, three bedrooms, and a bathroom with dual sink vanity and linen closet. Out back