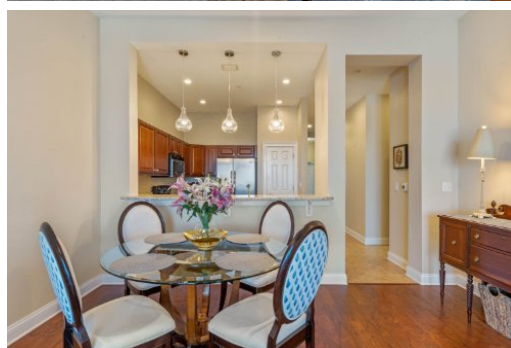


225 W Seminole Blvd, #608, Sanford, FL 32771

For More Info Visit  
[www.gateway608.info](http://www.gateway608.info)

**Patty Long**  
**Keller Williams Realty at the Parks**  
407-810-1470  
[pattylong@kw.com](mailto:pattylong@kw.com)

**kw** at the PARKS  
KELLERWILLIAMS, REALTY



**3 Beds | 3 Baths | 1741 Sqft**  
**\$379,900**

What a view! Watch sailboats and space launches from your private screened balcony! Gateway at Riverwalk is historic downtown Sanford's luxury condo development on the shores of beautiful Lake Monroe. This is a rare opportunity to own a penthouse level 3 bed/3 full bath, dual master suite, move-in-ready condo. This lakeside, marina-view unit offers soaring 11' ceilings, wood flooring, granite counters, custom fireplace/TV/shelving wall feature, new HVAC and tankless water heater, keyless security, upgraded lighting throughout, large utility room and more! The functional split floor plan offers two generous master suites plus a third room with that can easily flex as a bedroom, office or den. Large Community Clubhouse features comfortable seating, Kitchen, Bar, Pool table and Fitness Room. Conveniently located to I-4 and the 417 and steps from the waterfront and all that Historic Downtown Sanford has to offer. Make an appt to see today!

Information provided is for consumer's personal, non-commercial use and may not be used for any purpose other than to identify prospective properties consumers may be interested in purchasing. Information is deemed reliable but not guaranteed.