

10945 Big Tree Lane, Clermont, FL 34711

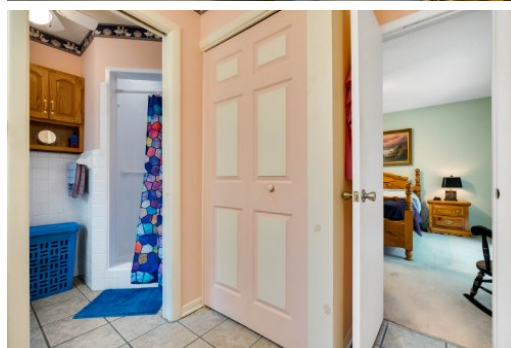
For More Info Visit  
[tourdrops.com/dtour/358706](http://tourdrops.com/dtour/358706)



**Dawn Giachetti**  
**Premier Sotheby's International Realty**  
352-874-2100  
[DawnGiachetti@gmail.com](mailto:DawnGiachetti@gmail.com)  
[www.DawnGiachetti.com](http://www.DawnGiachetti.com)



Premier  
**Sotheby's**  
INTERNATIONAL REALTY



**3 Beds | 2 Baths | 1656 Sqft**  
**349900**

Lake access to the Clermont Chain of Lakes via Crescent Lake in this small community with no HOA. A very well-maintained home is on an oversized, almost half-acre lot with amazing mature landscaping and trees. There is a huge living room with lots of windows for natural light, plus a huge family room with built-ins and a wood-burning stone fireplace. The kitchen has plenty of cabinets and countertops, plus a nicely sized dining room area with built-in cabinets for extra storage or to use as a china cabinet. The master suite has a great view of the rear yard, and other bedrooms look out onto the front yard. Amazing Florida room can be transformed into a bonus room with little effort. At 16-by-23-feet (368 square feet), this can be a workout room, add a split AC unit, make it an office or game room; so many possibilities. The screened-in porch is amazing, located under the trees and behind the lush landscaping; you can really relax in this space.

Information provided is for consumer's personal, non-commercial use and may not be used for any purpose other than to identify prospective properties consumers may be interested in purchasing. Information is deemed reliable but not guaranteed.