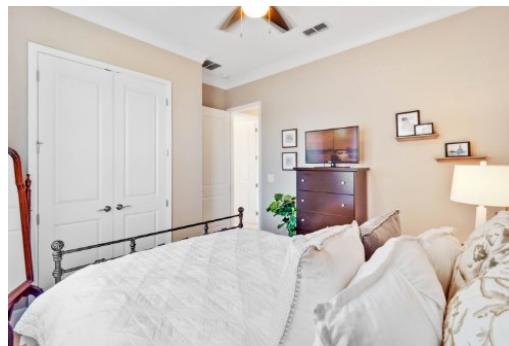
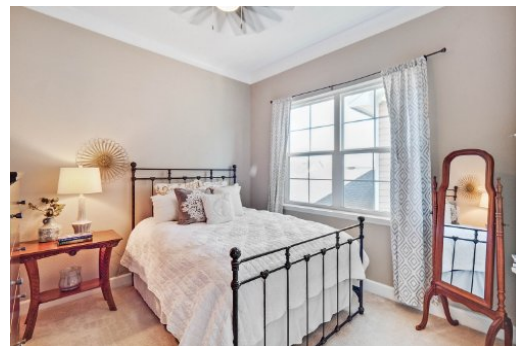
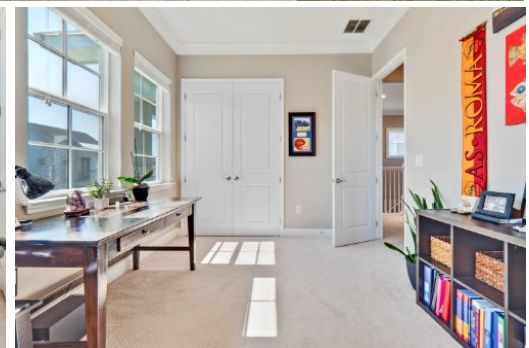


**Deanna Armel, Broker/CEO**  
**Armel Real Estate, Inc.**  
407-509-3812  
deanna@armelrealestate.com  
https://www.armelrealestate.com



**3 Beds | 3.0 Baths | 1942 Sqft**  
**\$485,000**

Welcome to this lovely, 2-story, 2014, Minto Home in the Heart of Lake Nona's Laureate Park. This beauty is comprised of 1,942 SF with a 2-car garage, 3 Bedrooms, 2 and a half Baths, the Master Suite downstairs, an upstairs Loft with Balcony and covered back porch and fenced-in yard. The covered front porch allows you to enjoy the impeccably manicured, open courtyard out front. Prepare to be impressed with the gorgeous hardwood floors as you enter the front door throughout the first floor living areas. This home offers a wonderful open and split floor plan with all living space downstairs and 2 Bedrooms, 1 Full Bath and Loft upstairs. The gourmet kitchen is complete with 42 inch solid wood cabinets, granite counters, glass mosaic backsplash, stainless steel appliances, a huge island with ample seating, all overlooking the dedicated Dining Room and large Family Room. The Garage features a pre-wired Electric Car Chargeport and has ample parking for 2 cars. The first level, indoor utility room is incredibly convenient and complete with a laundry sink as well. Simple living at it's finest within this lovely, cozy, well-cared for home that has been freshly painted outside! Come see this beauty located in the heart of Lake Nona's Medical City with state-of-

Information provided is for consumer's personal, non-commercial use and may not be used for any purpose other than to identify prospective properties consumers may be interested in purchasing. Information is deemed reliable but not guaranteed.

the-art amenities that include an amazing aquatic center, fitness center, multiple playgrounds, trails, and a dog park. Premier location being located on a quiet street with minimal traffic and only short walking distance to the gym, pool, Canvas Restaurant, garden and Crescent Park. Minutes away form the JSTA, KPMG and the Lake Nona Town Center which includes Boxi Park.