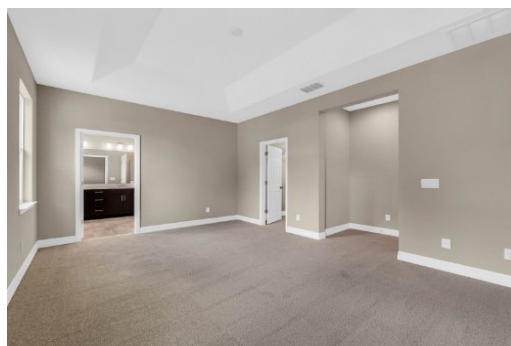


2221 Regency Park Dr., Deland, FL 32724

For More Info Visit
tourdrop.com/dtour/348052

Bee Powell
Bee Realty Corp
386-279-7522
bee@beerealtycorp.com
<http://bee-realty.com/>



3 Beds | 2 Baths | 1735 Sqft 272990

DELAND: NEW BUILD | BENTLEY GREEN SUBDIVISION | BONUS ROOM | COVERED PORCH: Don't miss your chance of owning this Amberly model home with 3 bedrooms, 2 bathrooms and bonus room. This open floor plan has 1,735 sq ft. The bonus room/Den/Office features french doors and tile floors. This space also makes a great playroom. The Kitchen/Family room combo is large and has plenty of room for your living and dining room furniture. Sliding doors lead to the covered porch for easy indoor and outdoor living. The kitchen will WOW you! Dark Cabinets, quartz counter tops, stainless steel appliances and a large center island. The Master bedroom features a large walk in closet, tray ceilings and master bathroom with his and her sinks and walk in shower. Additional bedrooms are spacious and share a guest bathroom. You will love the covered porch private backyard views and plenty of space for your outdoor living furniture and grill. Inside laundry and attached 2 car garage complete this home. Amenities include a community pool, park and playground. This home is a MUST SEE!

Information provided is for consumer's personal, non-commercial use and may not be used for any purpose other than to identify prospective properties consumers may be interested in purchasing. Information is deemed reliable but not guaranteed.