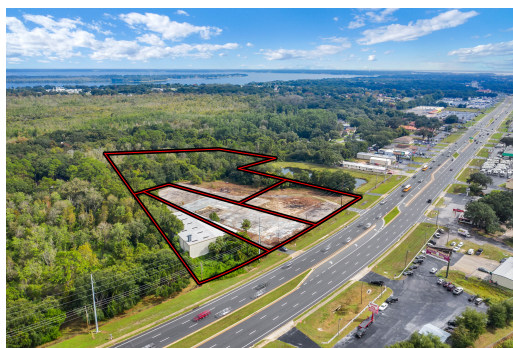


3131 U.S. Highway 441/27, Fruitland Park , FL 34731

For More Info Visit
tourdrops.com/dtours/347834



Sharadan Edmonds
Allison James Estates & Homes
941-875-6535
sharadansells@yahoo.com
WWW.SharadanEdmonds.AllisonJamesInc.com



Prime Investment & Development area! Over 560 feet of Highway frontage on 441/27 & approximately 7 acres of land. Mixed Use Zoning; C-2/General Commercial, Industrial, CPUD with a FLU of Commercial & CPUD with a FLU of Industrial. The zoning is designed to accommodate both general retail sales/services & more, making this a one of a kind

Information provided is for consumer's personal, non-commercial use and may not be used for any purpose other than to identify prospective properties consumers may be interested in purchasing. Information is deemed reliable but not guaranteed.