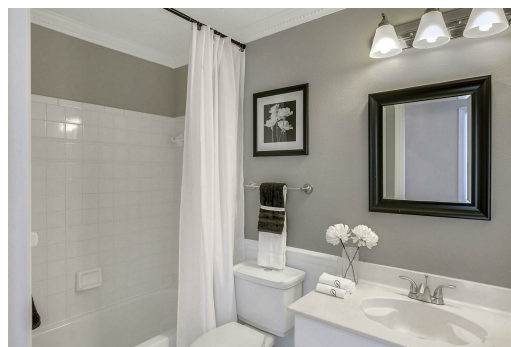
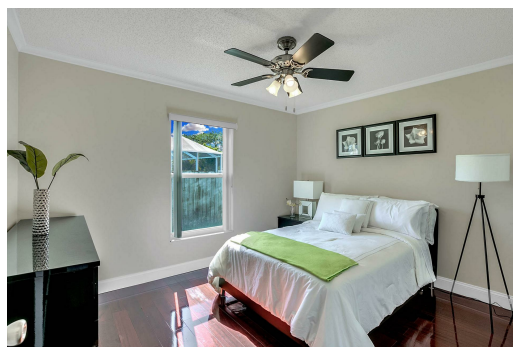
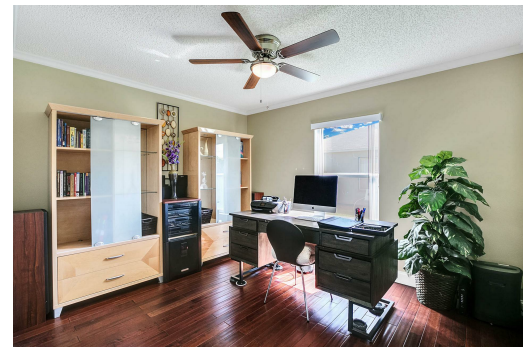
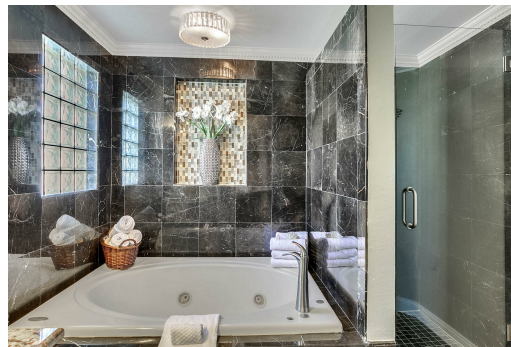


**William Kopp, PA**  
**KW Tampa Central**  
813-419-2011  
[williamkopp@kw.com](mailto:williamkopp@kw.com)  
[www.WilliamKopp.com](http://www.WilliamKopp.com)



**5 Beds | 4 Baths | 2294 Sqft  
329,900**

1. Exquisite split floor plan home offers 5 bedrooms and 4 baths. From the moment you enter the home you will appreciate the attention to detail with high baseboards, chair railing and unique tile throughout the living area. The kitchen features granite counter tops, with an appealing backsplash and new stainless steel appliances. The kitchen is open to the family room which showcases an elegant wood burning fireplace. The master bedroom provides room for a king size bed and has a walk-in closet. The master bath has dual sinks, a separate shower and a grand soaking tub. Two bedrooms have en-suite bathrooms and could be used as an in-law suite. Located with easy access to downtown St. Pete, I-275 and the Pinellas Beaches this home is a must see.